



## Accessory Fitting Instructions

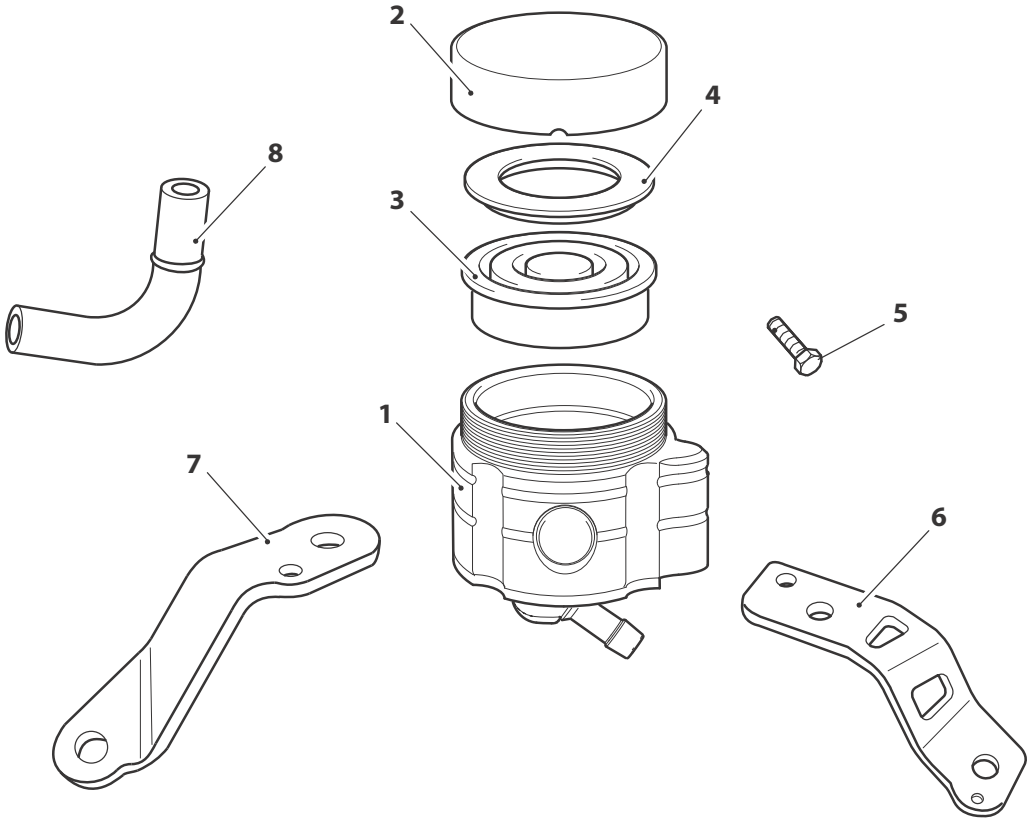
Front Machined Brake Reservoir Kit	
Kit number	Models Affected
A9620041	Speed Triple from VIN 461332, Speed Triple R
T2025067	Speed Triple from VIN 461332, Speed Triple S, Speed Triple R
A9628022	Daytona 675 R from VIN 564948
A9628041	Thruxton 1200 R
A9628045	Speed Triple from VIN 461332, Speed Triple R, Speed Triple S, Speed Triple RS, Street Triple R from VIN 793032, Street Triple R LRH (Low Ride Height), Street Triple RS

Thank you for choosing this Triumph genuine accessory kit. This accessory kit is the product of Triumph's use of proven engineering, exhaustive testing, and continuous striving for superior reliability, safety and performance.

Completely read all of these instructions before commencing the installation of the accessory kit in order to become thoroughly familiar with the kit's features and the installation process.

These instructions should be considered a permanent part of your accessory kit, and should remain with it even if your accessory equipped motorcycle is subsequently sold.

Parts supplied



1. Brake fluid reservoir	1 off	5. Screw, M6 x 16 mm	1 off
2. Reservoir cap	1 off	6. Bracket (A9628022 only)	1 off
3. Diaphragm	1 off	7. Bracket (A9628041 only)	1 off
4. Diaphragm support ring	1 off	8. Hose (A9628041 only)	1 off



## Warning

The accessory kits covered in this instruction are designed for use on specific models of Triumph motorcycle. The accessory kits and the models applicable are listed at the start of the instruction. They should not be fitted to any other Triumph model or to any other manufacturer's motorcycle. Fitting an accessory kit to a Triumph model not listed, or to any other manufacturer's motorcycle will affect the performance, stability and handling of the motorcycle. This may affect the rider's ability to control the motorcycle and may result in loss of motorcycle control and an accident.



## Warning

Always have Triumph approved parts, accessories and conversions fitted by a trained technician of an authorised Triumph dealer. The fitment of parts, accessories and conversions by a technician who is not of an authorised Triumph dealer may affect the handling, stability or other aspects of the motorcycle's operation which may result in loss of motorcycle control and an accident.



## Warning

Throughout this operation, ensure that the motorcycle is stabilised and adequately supported to prevent risk of injury from the motorcycle falling.



## Warning

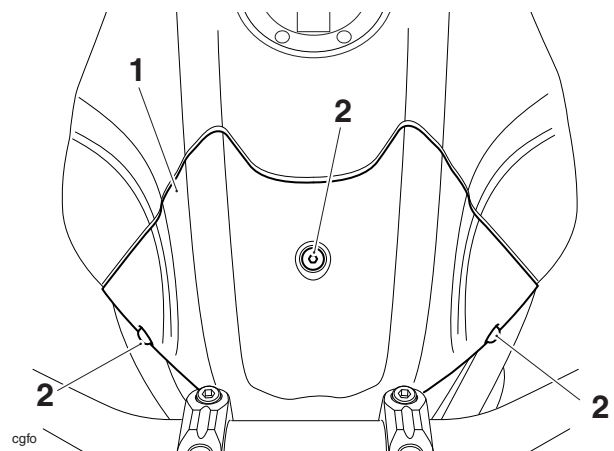
A torque wrench of known accurate calibration must be used when fitting this accessory kit. Failure to tighten any of the fasteners to the correct torque specification may affect motorcycle performance, handling and stability. This may result in loss of motorcycle control and an accident.

### Note:

- Triumph offers a broad range of approved genuine accessories for your motorcycle. We cannot therefore cover all possible equipment variations in these instructions. For removal and installation of Triumph Genuine Accessories, always refer to the instructions supplied with the respective accessory kit. To obtain additional copies of any Triumph accessory instructions, visit [www.triumphinstructions.com](http://www.triumphinstructions.com) or contact your authorised Triumph dealer.

### Note:

- Ensure that a relevant Triumph Service Manual is available for reference during the fitting of this accessory kit.
- For Daytona 675 R from VIN 564948, Thruxton 1200 R, Street Triple R from VIN 793032, Street Triple R LRH (Low Ride Height), Street Triple RS: Remove the seat as described in the Service Manual.
  - For Speed Triple from VIN 461332, Speed Triple S, Speed Triple R, Speed Triple RS: Release the three fixings and remove the front panel from the fuel tank. Retain the front panel and its fixings for re-use.



1. Front panel
2. Fixings

### All Models

3. Disconnect the battery as described in the Service Manual.
4. Note the position and orientation of the original master cylinder fluid reservoir.
5. Note the setting on the brake lever adjuster to ensure it is returned to the same position when the master cylinder fluid reservoir replacement procedure has been completed.



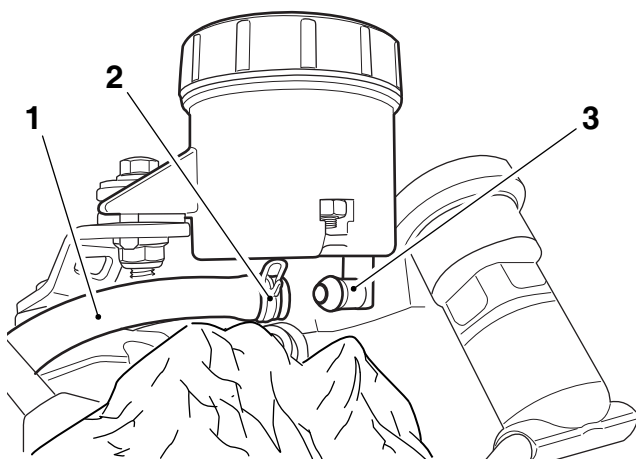
## Caution

To prevent damage, ensure that any displaced brake fluid does not come into contact with any part of the bodywork.

6. To drain the brake fluid from the master cylinder, attach a tube to the right hand brake caliper bleed nipple. Slacken the bleed nipple and allow the brake fluid to drain into a suitable container. Operate the brake lever until all fluid has been expelled from the master cylinder.

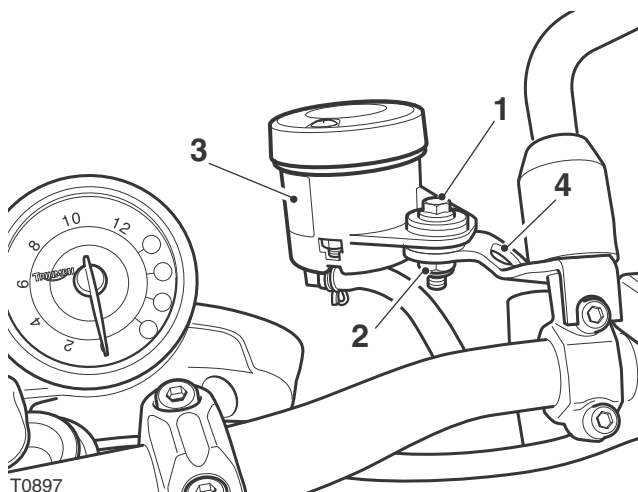
**Note:**

- **Note the position and orientation of the retaining clip for the brake fluid hose.**
7. Detach the brake fluid hose and its retaining clip from the reservoir, placing a cloth under the hose and reservoir connection to absorb any remaining fluid which may be displaced.



1. Brake fluid hose
2. Retaining clip
3. Reservoir spigot

8. Remove the M6 screw and nut securing the fluid reservoir to its mounting bracket. Retain the screw, nut and reservoir if the motorcycle is to be returned to its original condition.



1. M6 screw
2. Nut
3. Fluid reservoir
4. Mounting bracket

**Note:**

- **Note the position and orientation of the retaining clip for the brake fluid hose.**

9. **For Speed Triple from VIN 461332, Speed Triple S, Speed Triple R, Speed Triple RS and Thruxton 1200 R:**

Remove the brake fluid hose and its retaining clip from the master cylinder, placing a cloth under the master cylinder connection to absorb any remaining fluid which may be displaced. Retain the hose for re-use.

**Note:**

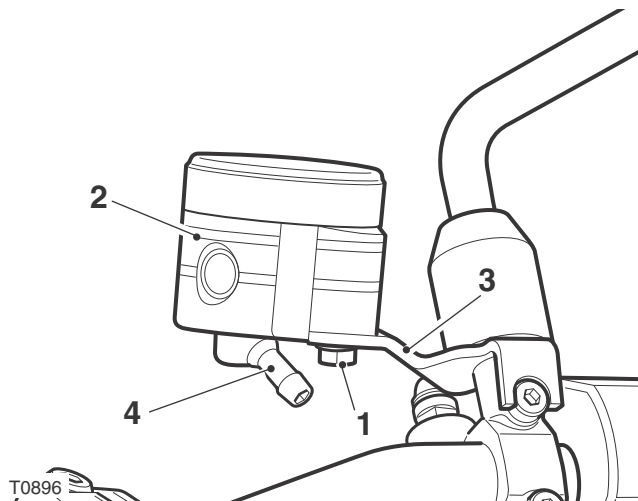
- **For Daytona 675 R from VIN 564948, continue from step 10 to step 13. Then continue from step 33.**
- **For Speed Triple from VIN 461332, Speed Triple S, Speed Triple R, Speed Triple RS, Street Triple R from VIN 793032, Street Triple R LRH (Low Ride Height), Street Triple RS continue from steps 14 to 18. Then continue from step 33.**
- **For Thruxton 1200 R continue from step 19.**

**Daytona 675 R from VIN 564948**

10. Remove the original brake reservoir mounting bracket from the handlebar. Retain the screw for re-use. Retain the mounting bracket if the motorcycle is to be returned to original condition.
11. Fit the new reservoir mounting bracket from the kit and secure with the original screw. Tighten the screw to **10 Nm**.
12. Locate the new fluid reservoir onto the new mounting bracket and secure using the M6 screw from the kit. Tighten to **8 Nm**.
13. Refit the hose to the front brake master cylinder and reservoir. Ensure that the hose is fully on the spigots and secure with the retaining clips as noted for removal.

**Speed Triple from VIN 461332, Speed Triple S, Speed Triple R, Speed Triple RS, Street Triple R from VIN 793032, Street Triple R LRH (Low Ride Height), and Street Triple RS**

14. Locate the new fluid reservoir onto its mounting bracket and secure using the M6 screw from the kit, as shown below, and tighten to **8 Nm**.



- T0896
1. M6 screw
  2. Reservoir
  3. Mounting bracket
  4. Reservoir spigot



### Warning

When trimming any brake hose ensure hands are clean and free from oil or grease. Always use a clean sharp knife, never use any cutting tool which will create debris which could enter the hose during the trimming process. Oil, grease or debris which enters the braking system will cause contamination and may reduce the efficiency of the braking system leading to an accident.

15. **Speed Triple from VIN 461332 and Speed Triple R up to VIN 733009**  
Recover the original brake fluid hose, remove the retaining clips and carefully trim the hose to a length of 80 mm using a clean sharp knife. Retain the 80 mm hose and discard the excess.

**Speed Triple S, Speed Triple R from VIN 735337, Speed Triple RS, Street Triple R from VIN 793032, Street Triple R LRH (Low Ride Height), and Street Triple RS,**

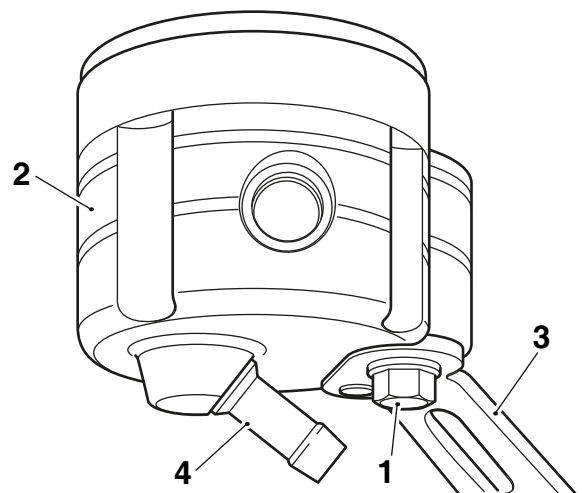
Recover the original brake fluid hose, remove the retaining clips and carefully trim the hose to a length of 45 mm using a clean sharp knife. Retain the 45 mm hose and discard the excess.

### Note:

- The 45 mm and 80 mm length of brake hose is not compatible with the original brake fluid reservoir. Replace the 45 mm or 80 mm length of brake hose with a new original specification brake hose if the motorcycle is returned to its original condition.
16. Check the trimmed hose for any splitting, damage or internal debris. Replace if necessary.
  17. Refit the retaining clips.
  18. Refit the hose to the front brake master cylinder and reservoir. Ensure that the hose is fully on the spigots and secure with the retaining clips as noted for removal.

### ThruXton 1200 R with Standard Handlebars Fitted

19. Remove the bracket from the master cylinder. Locate the new fluid reservoir onto the original mounting bracket and secure using the M6 screw from the kit, as shown below, and tighten to **8 Nm**.



1. M6 screw
2. Reservoir
3. Mounting bracket
4. Reservoir spigot



### Warning

When trimming any brake hose ensure hands are clean and free from oil or grease. Always use a clean sharp knife, never use any cutting tool which will create debris which could enter the hose during the trimming process. Oil, grease or debris which enters the braking system will cause contamination and may reduce the efficiency of the braking system leading to an accident.

20. Recover the original brake fluid hose, remove the retaining clips and carefully trim the hose to a length of 52 mm using a clean sharp knife. Retain the 52 mm hose and discard the excess.

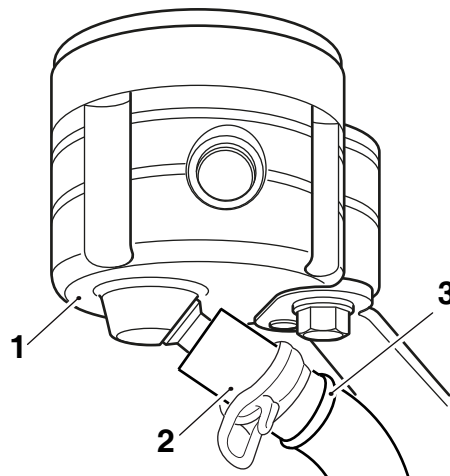
**Note:**

- **The 52 mm length of brake hose is not compatible with the original brake fluid reservoir. Replace the 52 mm length of brake hose with a new original specification brake hose if the motorcycle is returned to its original condition.**
21. Check the trimmed hose for any splitting, damage or internal debris. Replace if necessary.
22. Refit the retaining clips.
23. Refit the hose to the front brake master cylinder and reservoir. Ensure that the hose is fully on the spigots and secure with the retaining clips as noted for removal.
24. Fit the reservoir and bracket on to the master cylinder and secure with the original screw. Tighten the screw to **7 Nm**.

**Thruxton 1200 R with Accessory Low Handlebars Fitted**

25. Remove the original brake reservoir mounting bracket from the master cylinder. Retain the screw for re-use. Retain the mounting bracket if the motorcycle is to be returned to its original condition.
26. Fit the new reservoir mounting bracket from the kit and secure with the original screw. Tighten the screw to **7 Nm**.
27. Locate the new fluid reservoir onto the new mounting bracket and secure using the M6 screw from the kit. Tighten to **8 Nm**.
28. Recover the original brake fluid hose and remove the retaining clips. Retain the retaining clips for re-use, retain the hose for re-use if the motorcycle is returned to its original condition.
29. Collect the new brake fluid hose from the kit.
30. Fit the retaining clips to the new brake fluid hose.

31. Fit the end of the new hose with the raised ring profile on to the new reservoir. Ensure the hose is fully on the reservoir spigot. Secure with the retaining clip as noted for removal.



1. Reservoir  
2. Hose  
3. Raised ring profile

32. Fit the hose to the front brake master cylinder. Ensure that the hose is fully on the spigot and secure with the retaining clip as noted for removal.

**All Models**



**Warning**

Use only DOT 4 specification brake fluid as specified in the Service Manual. The use of brake fluids other than those DOT 4 fluids listed in the Service Manual may reduce the efficiency of the braking system leading to an accident.



**Warning**

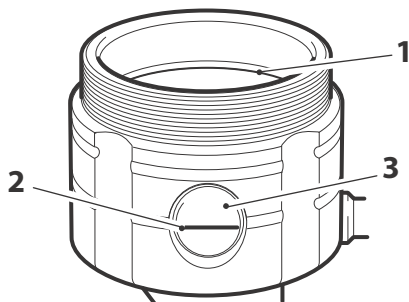
Ensure absolute cleanliness when adding brake fluid to the brake fluid reservoir. Do not allow moisture or debris to enter the cylinder as this will adversely affect the fluid properties. Always use fluid from a sealed container and do not use fluid from a container which has been opened for any period of time. Always check for fluid leakage around hydraulic fittings and for damage to hoses. A dangerous riding condition leading to an accident could result if this warning is ignored.



**Caution**

To prevent damage, ensure that any displaced brake fluid does not come into contact with any part of the bodywork.

33. Fill the fluid reservoir with new DOT 4 brake fluid and bleed the front brakes, as described in the Service Manual.
34. To inspect the brake fluid level, check the level of fluid visible in the window on the fluid reservoir body.
35. The brake fluid level must be between the upper and lower level lines with the reservoir held in a horizontal position, as shown below.



1. Upper level line
2. Lower level line
3. Window

36. Fit the diaphragm and diaphragm support ring into the fluid reservoir.
37. Fit the new reservoir cap and carefully screw it down, ensuring it is fully tightened.

### **Warning**

Always ensure the brake lever adjuster is returned to the original setting. Operating the motorcycle with lever settings which are unfamiliar may result in loss of motorcycle control and an accident.

38. Ensure the brake lever adjuster is reset to the original setting.
39. Examine the brake system for correct operation and fluid leaks. Rectify as necessary.
40. Re-connect the battery, positive (red) lead first.
41. **For Speed Triple from VIN 461332, Speed Triple S, Speed Triple R, Speed Triple RS:** Refit the front panel to the fuel tank and tighten the fixings to **2 Nm**.

42. **For Daytona 675 R from VIN 564948, Thruxton 1200 R Street Triple R from VIN 793032, Street Triple R LRH (Low Ride Height), and Street Triple RS:**

Refit the seat as described in the Service Manual.

### **Warning**

It is dangerous to operate the motorcycle with defective brakes; you must have your authorised Triumph dealer take remedial action before you ride the motorcycle again. Failure to take remedial action may result in reduced braking efficiency leading to loss of motorcycle control and an accident.

### **Warning**

If, after fitment of this accessory kit, you have any doubt about the performance of any aspect of the motorcycle, contact an authorised Triumph dealer and do not ride the motorcycle until the authorised dealer has declared it fit for use. Riding a motorcycle when there is any doubt as to any aspect of the performance of the motorcycle may result in loss of motorcycle control and an accident.

### **Warning**

The motorcycle must not be operated above the legal road speed limit except in closed-course conditions.

### **Warning**

Only operate this Triumph motorcycle at high speed in closed-course, on-road competition or on closed-course racetracks. High-speed operation should only be attempted by riders who have been instructed in the techniques necessary for high-speed riding and are familiar with the motorcycle's characteristics in all conditions.

High-speed operation in any other circumstances is dangerous and may lead to loss of motorcycle control and an accident.