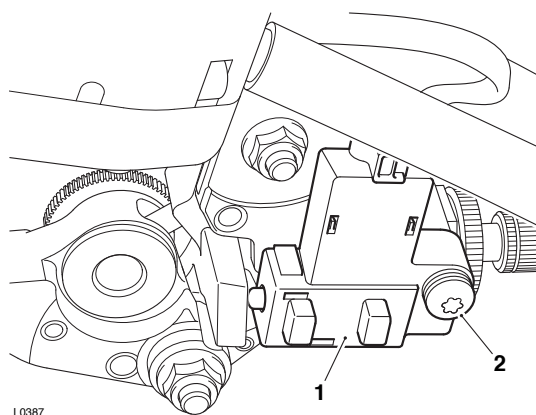


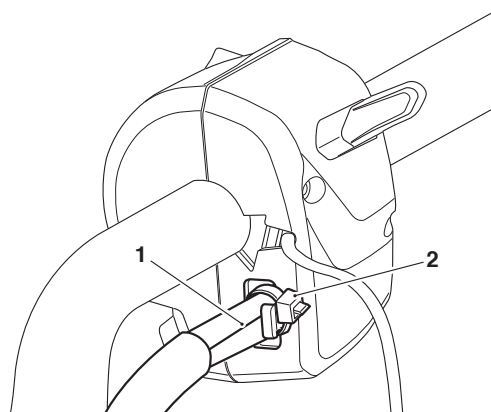
**1. Fixing (one of two shown)**

2. Release the fixing and detach the clutch switch from the clutch lever assembly.



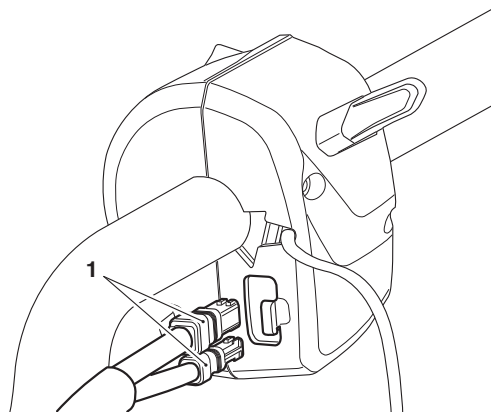
- 1. Clutch switch**  
**2. Fixing**

3. Release the fixings and remove the clamp from the clutch lever assembly. Without disconnecting the clutch cable, lay the lever aside.  
4. Remove the cable tie securing the switch housing wiring harness to the left hand switch housing.



- 1. Wiring harness**  
**2. Cable tie**

5. Gently pull on the wiring harness to disconnect the switch housing connectors.

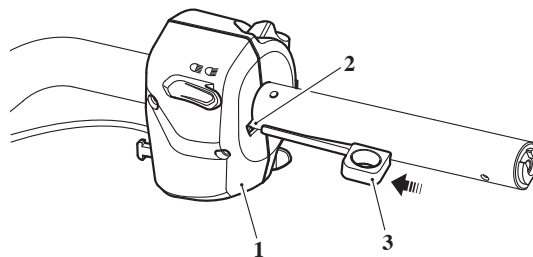


### 1. Switch housing connectors

#### Note

- The T3880369 - Switch Housing Removal Tool is required to release the handlebar switch housings from their retaining clips.
- When inserting T3880369 - Switch Housing Removal Tool into the switch housing, a click can be felt/heard as the retaining clip is released.
- The retaining clip will remain in position on the handle bar as the switch housing is removed. Note the position and orientation of the clip for installation.

6. Insert T3880369 - Switch Housing Removal Tool into the opening on the left hand switch housing until a click is felt/heard.

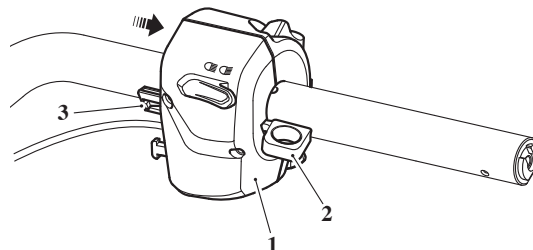


L0386\_1

1. Left hand switch housing
2. Opening
3. T3880369 - Switch Housing Removal Tool

7. Slide the switch housing towards the end of the handlebar to free it from the retaining clip.

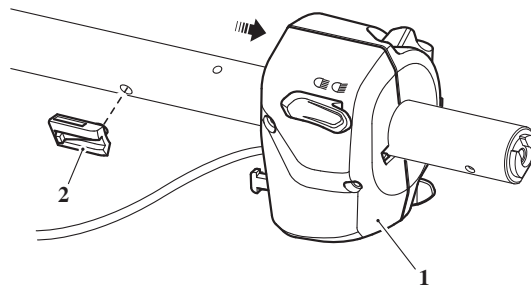
8. Withdraw T3880369 - Switch Housing Removal Tool from the switch housing.



L0386\_2

1. Left hand switch housing
2. T3880369 - Switch Housing Removal Tool
3. Retaining clip

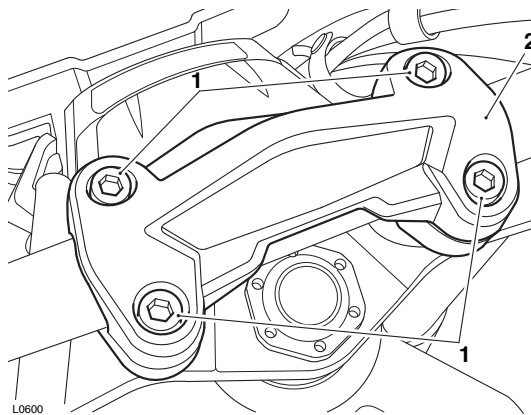
9. Slide the switch housing off the handlebar and collect the retaining clip.



L0385

1. Switch housing
2. Retaining clip

10. Release the fixings and remove the clamp from the front brake master cylinder. Taking care to not invert the brake fluid reservoir, lay the assembly aside.
11. With the aid of an assistant, support the handlebar and release the fixings securing the handlebar clamp to the risers. Remove the handlebar clamp.



L0600

1. Fixings
2. Handlebar clamp

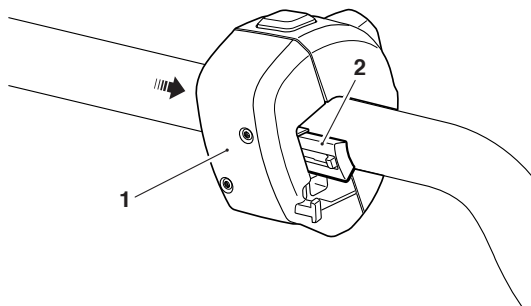
12. Slide the twist grip position sensor off the handle bar. Without disconnecting any wiring, lay the sensor aside.
13. Disconnect and remove the right hand switch housing as described in steps 4-9.

## Handlebars - Installation

### ! WARNING

Before starting work, ensure the motorcycle is stabilised and adequately supported. This will help prevent it from falling and causing injury to the operator or damage to the motorcycle.

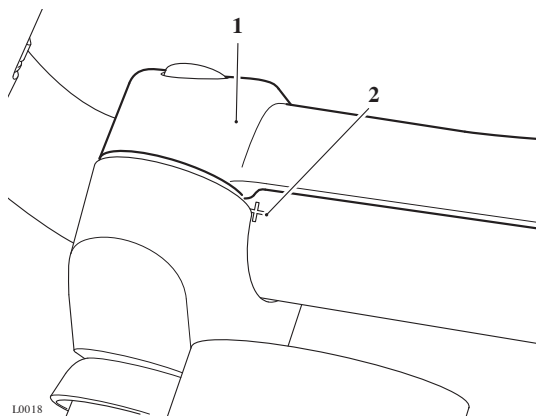
1. Fit the right hand switch housing retaining clip to the handlebar as noted during removal.
2. Slide the right hand switch housing onto the handlebar and over the retaining clip until it locks into position.



1. Right hand switch housing

## 2. Retaining clip

3. Slide the twist grip position sensor onto the right hand side of the handlebar.
4. Locate the handlebar onto the risers. Fit the handlebar clamp and fixings.
5. Align the handlebar alignment mark with the front split line of the right hand riser.
6. Tighten the front clamp bolts to **26 Nm**, then the rears.

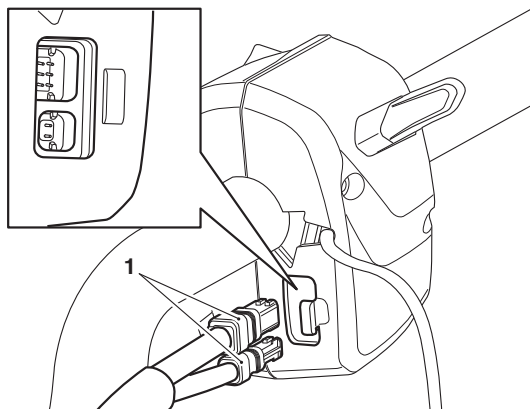


1. Handlebar upper clamp
2. Handlebar alignment mark

7. Connect the right hand switch housing electrical connectors and secure the wiring harness to the switch housing using a new cable tie.
8. Fit the retaining clip and left hand switch housing to the handle bar as described in steps 1 and 2.

### Note

- The left hand switch housing electrical connections are recessed into the switch housing body.
- To aid orientation, there are coloured dots on each connector. The coloured dots identify the bottom face of the connector.
- When inserting the connectors, carefully locate the connectors into their sockets, then use a suitable flat ended pin punch to push the connectors fully home. An audible click can be heard when the connectors are fully inserted.
- Do not use sharp tools, such as a flat bladed screw driver, to insert the connectors.



1. Switch housing electrical connectors

9. Connect the left hand switch housing electrical connectors and secure the wiring harness to the switch housing using a new cable tie.
10. Fit the left hand handlebar grip and secure with the fixings and washers. Tighten the fixings to **3 Nm**.
11. Position the clutch lever to the handlebar. Fit the clamp (UP arrow pointing upwards) and clamp fixings.
12. Align the split line of the clutch lever with the alignment mark on the upper surface of the handlebar, then tighten the clamp fixings, upper first, to **12 Nm**.
13. Fit the clutch switch to the clutch lever assembly and tighten its fixing to **2 Nm**.