

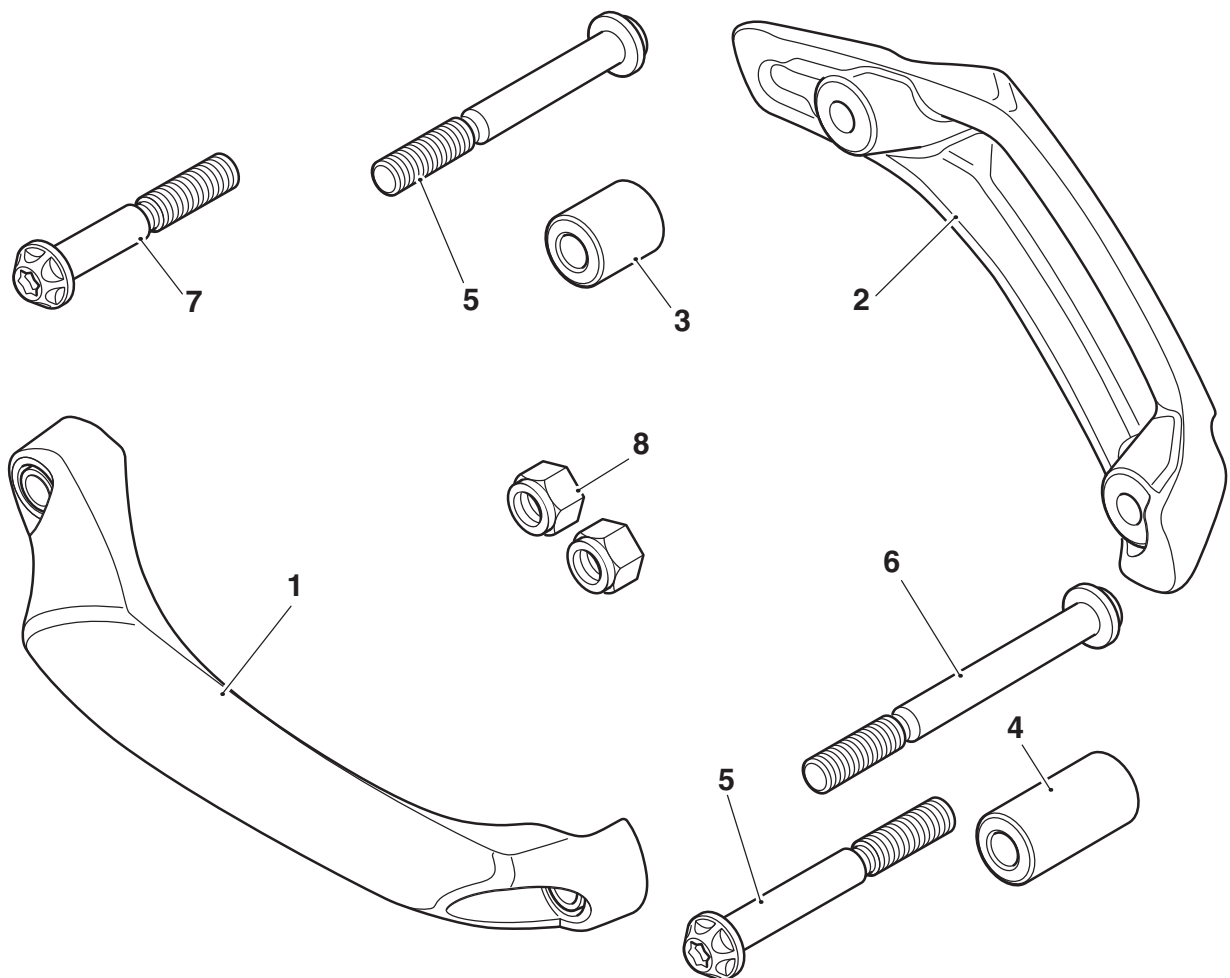
Fitting Instructions:

**Street Triple Rx, Street Triple from VIN 560477,
Street Triple R from VIN 560477, Street Triple R LRH (Low Ride Height),
Street Triple S, Street Triple S 660cc, Street Triple RS
A9788013**

Thank you for choosing this Triumph genuine accessory kit. This accessory kit is the product of Triumph's use of proven engineering, exhaustive testing, and continuous striving for superior reliability, safety and performance.

Completely read all of these instructions before commencing the installation of the accessory kit in order to become thoroughly familiar with the kit's features and the installation process.

These instructions should be considered a permanent part of your accessory kit, and should remain with it even if your accessory-equipped motorcycle is subsequently sold.



Parts Supplied:

1. Frame protector, right hand	1 off	5. Screw, M10 x 100 mm	2 off
2. Frame protector, left hand	1 off	6. Screw, M10 x 150 mm	1 off
3. Spacer, short	1 off	7. Screw, M10 x 70 mm	1 off
4. Spacer, long	1 off	8. Locknut, M10	2 off



Warning

The accessory kits covered in this instruction are designed for use on specific models of Triumph motorcycle. The accessory kits and the models applicable are listed at the start of the instruction. They should not be fitted to any other Triumph model or to any other manufacturer's motorcycle. Fitting an accessory kit to a Triumph model not listed, or to any other manufacturer's motorcycle will affect the performance, stability and handling of the motorcycle. This may affect the rider's ability to control the motorcycle and could cause an accident.



Warning

Always have Triumph approved parts, accessories and conversions fitted by a trained technician of an authorised Triumph dealer. The fitment of parts, accessories and conversions by a technician who is not of an authorised Triumph dealer may affect the handling, stability or other aspects of the motorcycle's operation which may result in loss of motorcycle control and an accident.



Warning

Throughout this operation, ensure that the motorcycle is stabilised and adequately supported to prevent risk of injury from the motorcycle falling.



Warning

A torque wrench of known accurate calibration must be used when fitting this accessory kit. Failure to tighten any of the fasteners to the correct torque specification may result in loss of motorcycle control and an accident.



Warning

If the engine has recently been running, the exhaust system will be hot. Before working on or near the exhaust system, allow sufficient time for the system to cool, as touching any part of a hot exhaust could cause burn injuries.

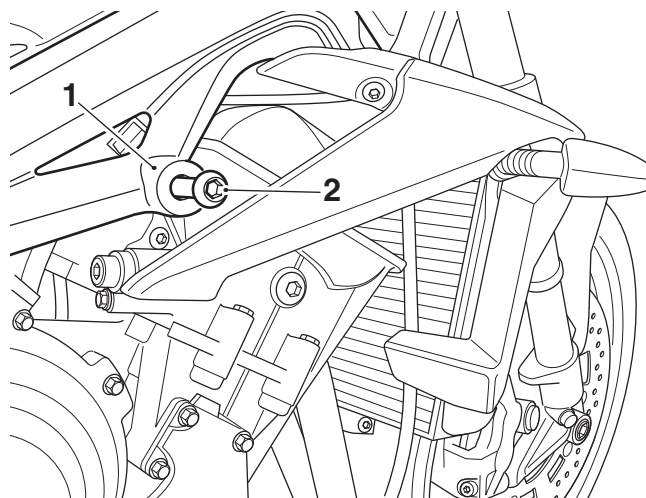


Caution

Remove the engine mounting fixings in the sequence detailed in this publication only. Do not remove the left hand or right hand top and front engine mounting fixings at the same time. This could result in the engine moving within the frame and misalignment of the engine mounting positions, preventing fitment of the new fixings.

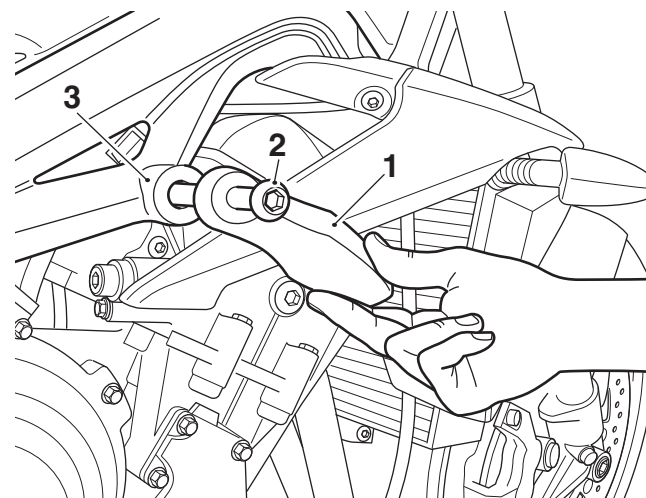
Right Hand Side

1. Remove the top engine mounting fixing from the cylinder head. Retain the fixing for use if the motorcycle is returned to its original condition.



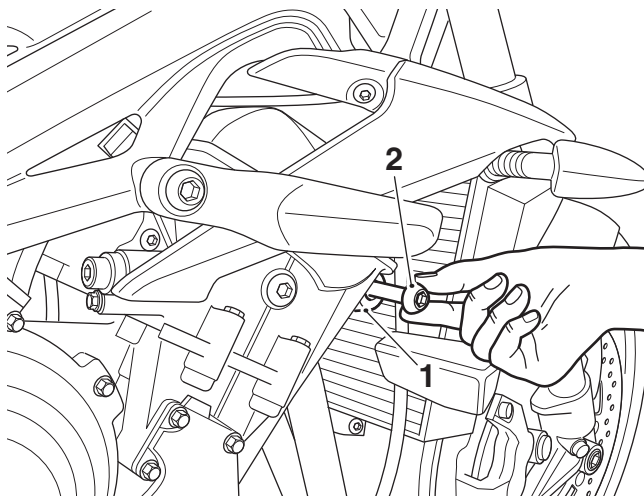
1. Top engine mounting
2. Fixing

2. Fit the right hand frame protector to the top engine mounting point, in the orientation shown and retain with the M10 x 70 mm screw provided. Do not fully tighten the screw at this stage.



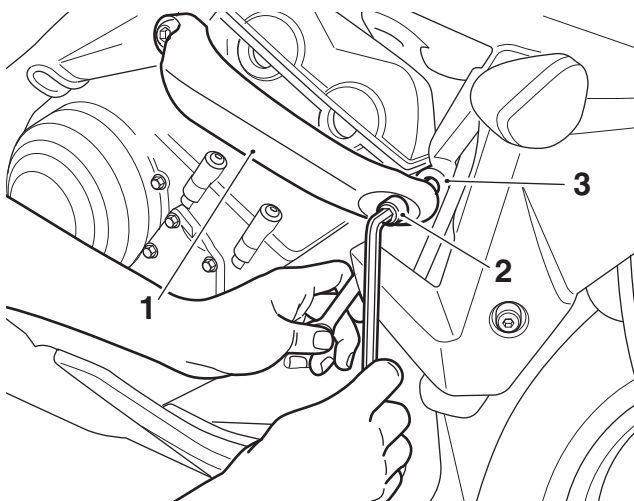
1. Frame protector, right hand
2. Screw, M10 x 70 mm
3. Top engine mounting

3. Remove the front engine mounting screw and locknut. Retain the original screw and locknut for use if the motorcycle is returned to its original condition.



1. Front engine mounting
2. Screw (locknut not shown)

4. Rotate the frame protector to align with the front engine mounting position. From the parts provided, fit one of the M10 x 100 mm screws and retain with a new locknut.

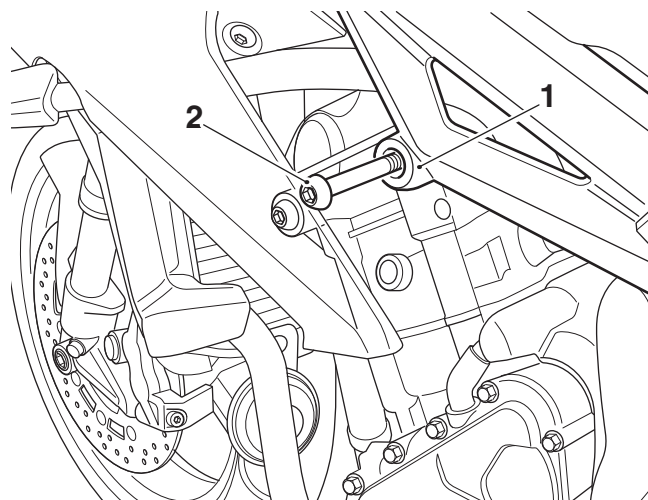


1. Frame protector, right hand
2. Screw, M10 x 100 mm
3. Front engine mounting

5. Tighten both frame protector fixings to **48 Nm**.

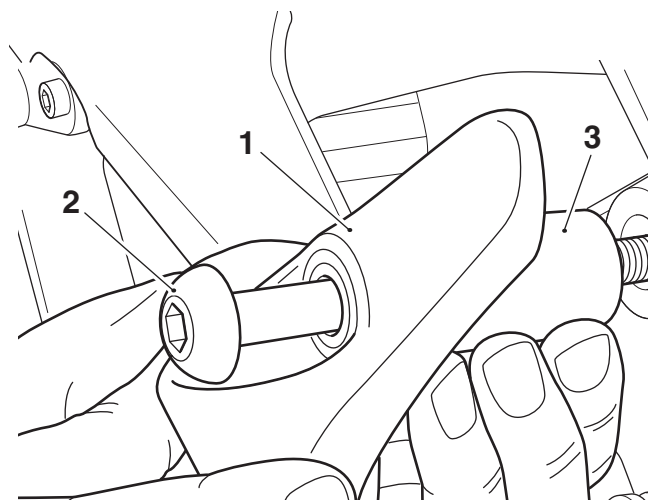
Left Hand Side

6. Remove the top engine mounting fixing from the cylinder head. Retain the fixing for use if the motorcycle is returned to its original condition.



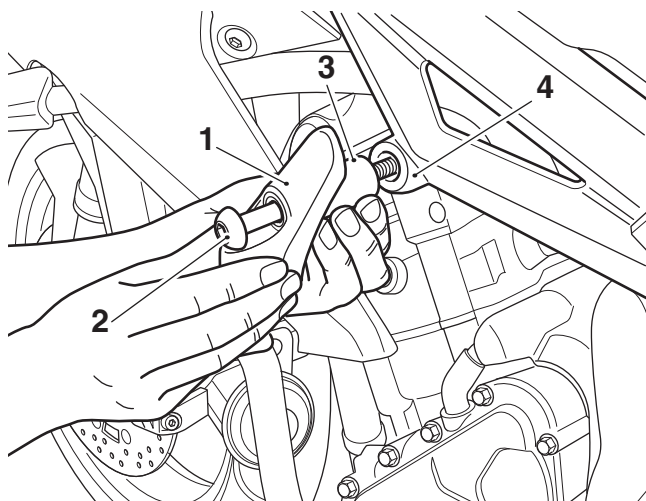
1. Top engine mounting
2. Fixing

7. Fit the M10 x 100 mm screw from the kit into the rear mounting point of the left hand frame protector. Slide the short spacer from the kit over the screw towards the frame protector.



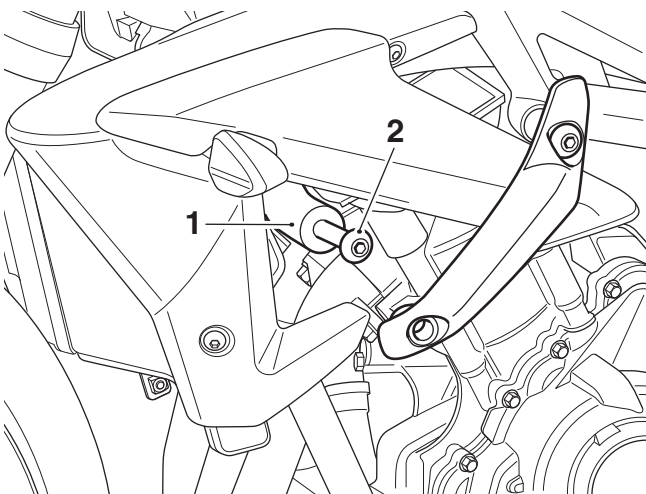
1. Frame protector, left hand
2. Screw, M10 x 100 mm
3. Spacer, short

8. Fit the frame protector to the top engine mounting point, in the orientation shown and retain with the M10 x 100 mm screw. Do not fully tighten the screw at this stage.



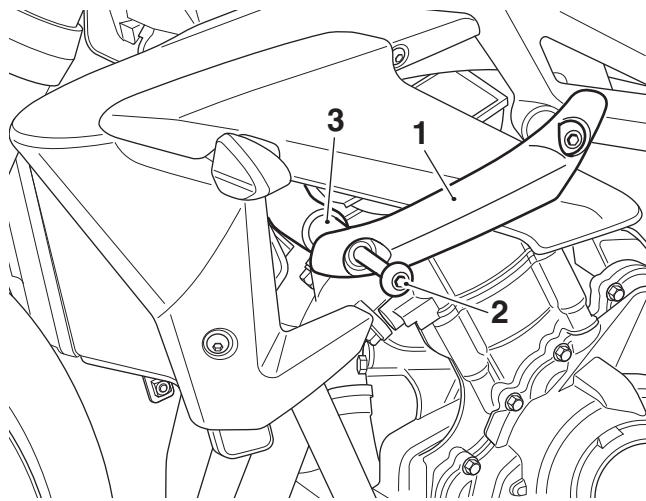
- 1. Frame protector, left hand
- 2. Screw, M10 x 100 mm
- 3. Spacer, short
- 4. Top engine mounting

9. Remove the front engine mounting screw and locknut. Retain the original screw and locknut for use if the motorcycle is returned to its original condition.



- 1. Front engine mounting
- 2. Screw (locknut not shown)

10. Rotate the frame protector to align with the front engine mounting position. From the parts provided, fit the M10 x 150 mm screw and long spacer as shown below, and retain with a new locknut.



- 1. Frame protector
- 2. Screw, M10 x 150 mm
- 3. Spacer, long

11. Tighten both frame protector fixings to **48 Nm**.



Warning

If, after fitment of this accessory kit, you have any doubt about the performance of any aspect of the motorcycle, contact an authorised Triumph dealer and do not ride the motorcycle until the authorised dealer has declared it fit for use. Riding a motorcycle when there is any doubt as to any aspect of the performance of the motorcycle may result in loss of control of the motorcycle leading to an accident.



Warning

Never ride an accessory-equipped motorcycle at speeds above 80 mph (130 km/h).

The presence of accessories will cause changes in the stability and handling of the motorcycle. Failure to allow for changes in motorcycle stability may lead to loss of control or an accident.

Remember that the 80 mph (130 km/h) limit will be reduced by the fitting of non-approved accessories, incorrect loading, worn tyres, overall motorcycle condition and poor road or weather conditions.



Warning

The motorcycle must not be operated above the legal road speed limit except in closed-course conditions.



Warning

Only operate this Triumph motorcycle at high speed in closed-course, on-road competition or on closed-course racetracks. High-speed operation should only be attempted by riders who have been instructed in the techniques necessary for high-speed riding and are familiar with the motorcycle's characteristics in all conditions. High-speed operation in any other circumstances is dangerous and will lead to loss of motorcycle control and an accident.